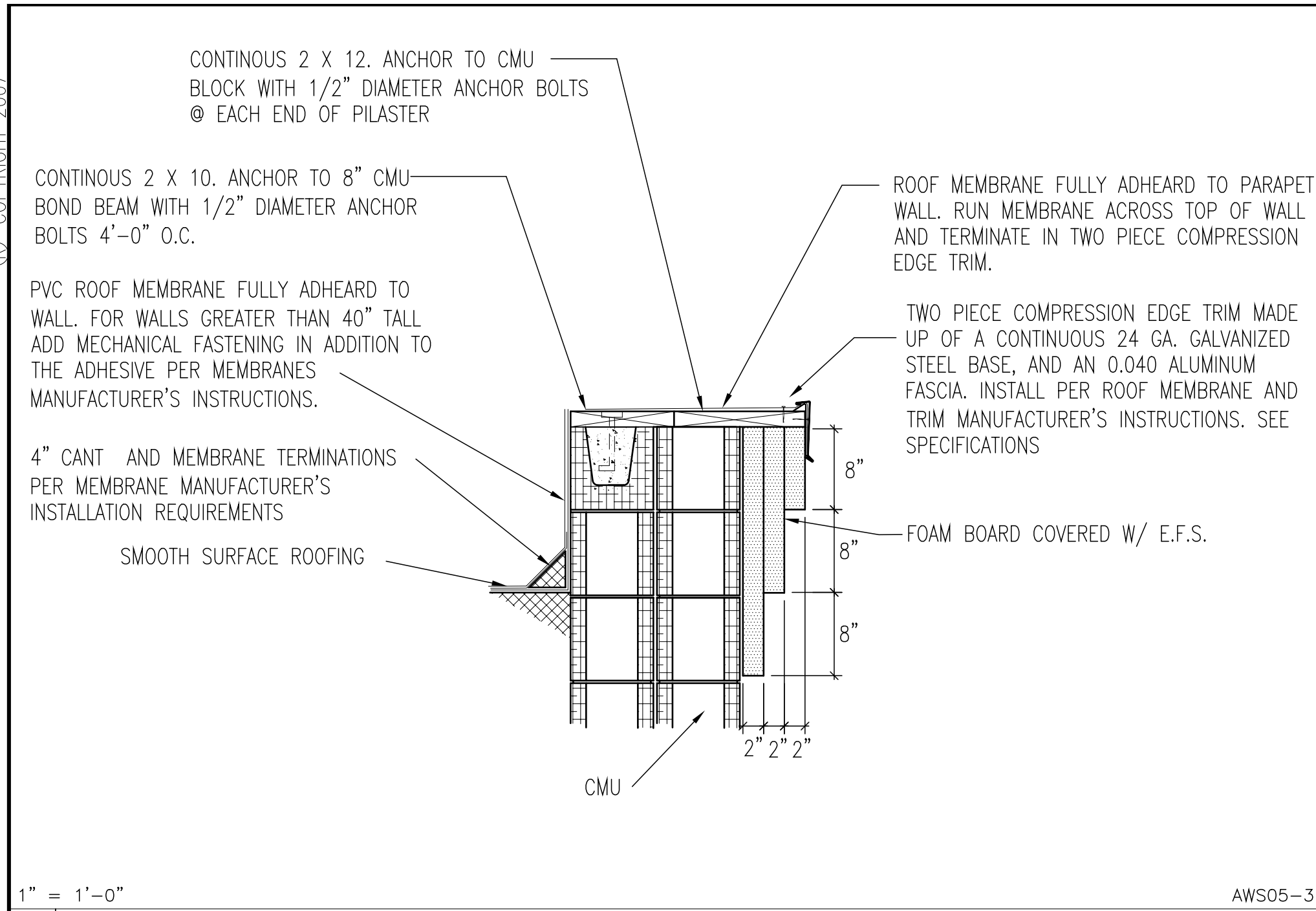
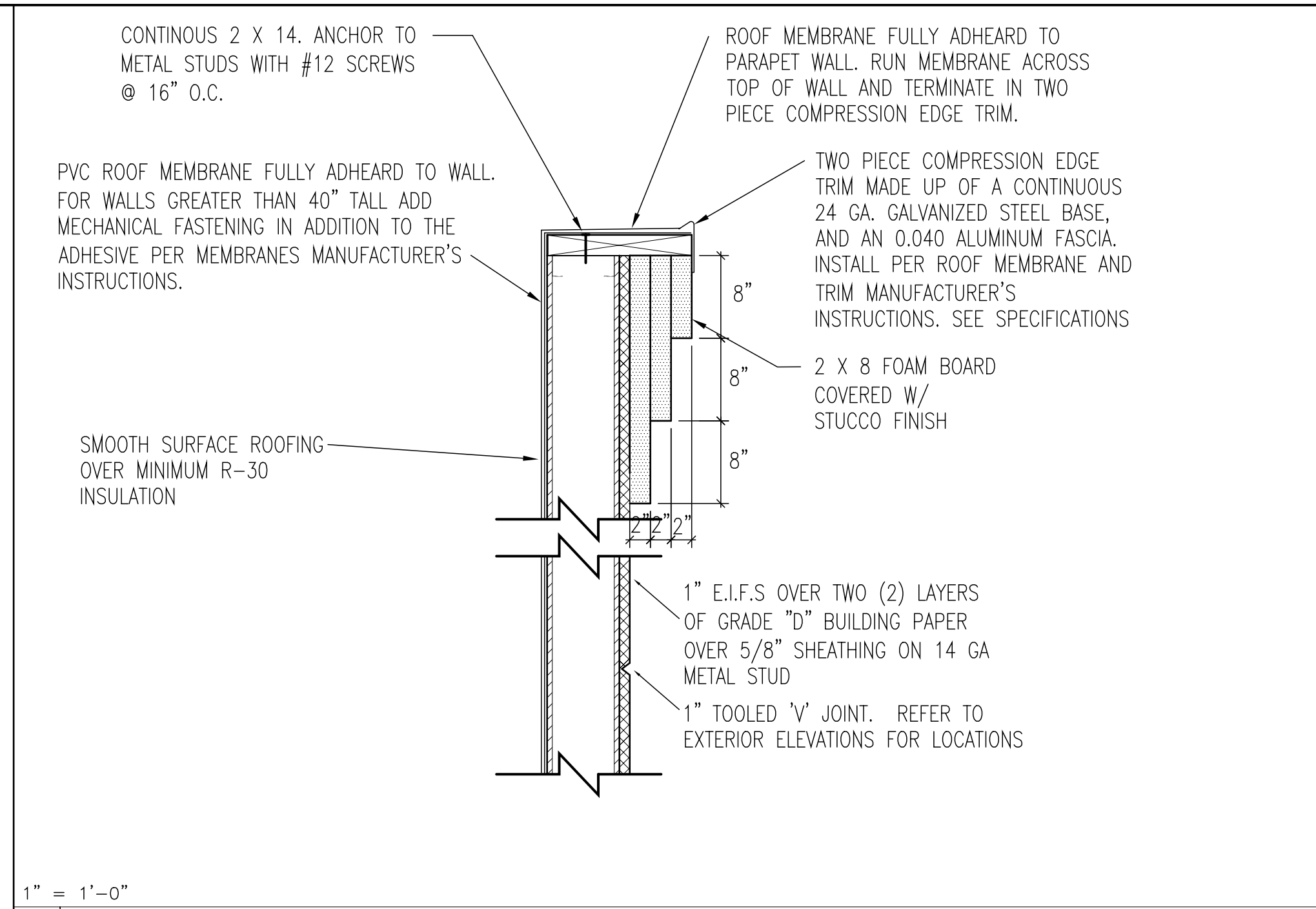


© COPYRIGHT 2007

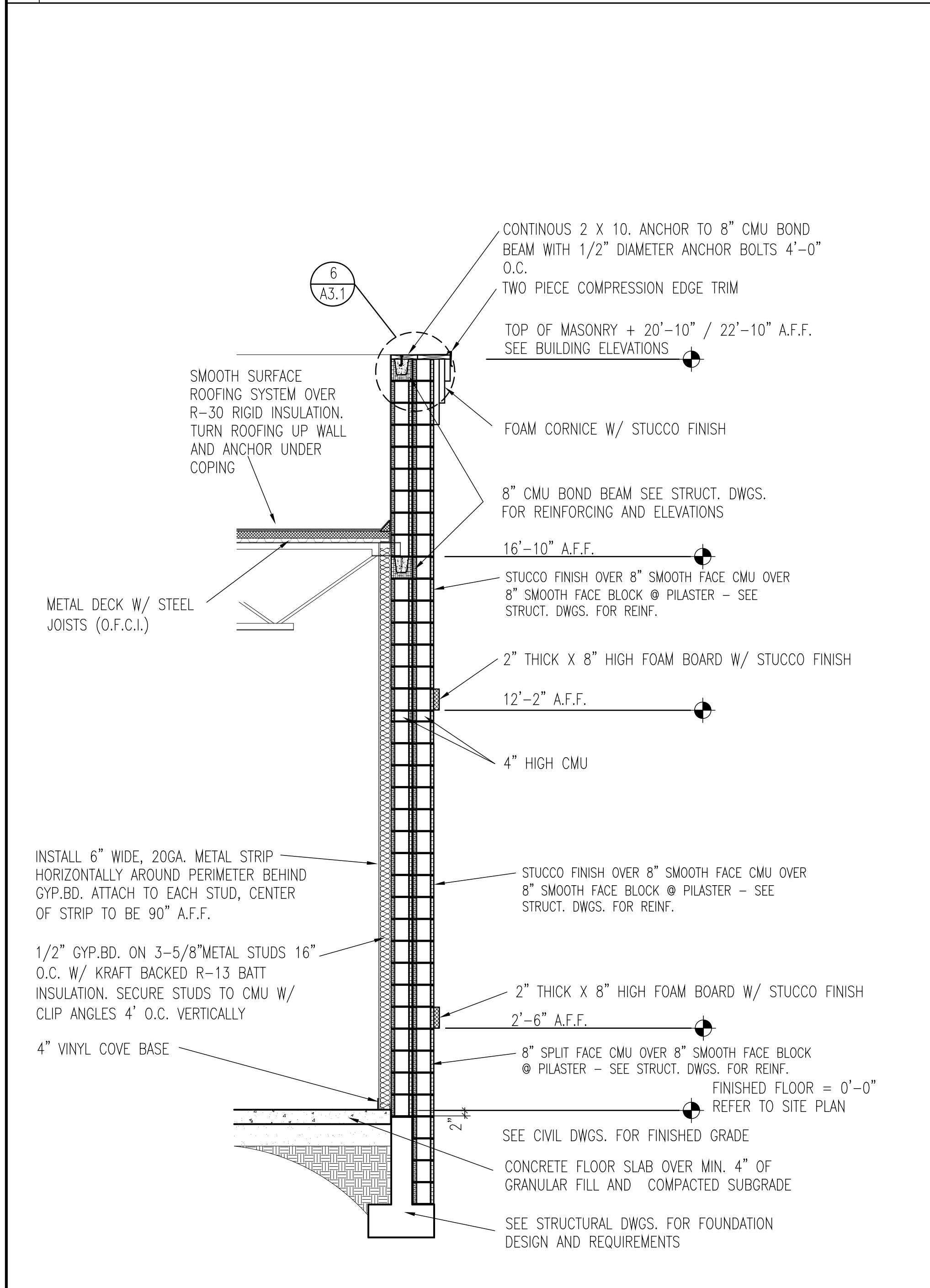


6 TYPICAL PARAPET DETAIL @ 8" PILASTER

AWS05-3

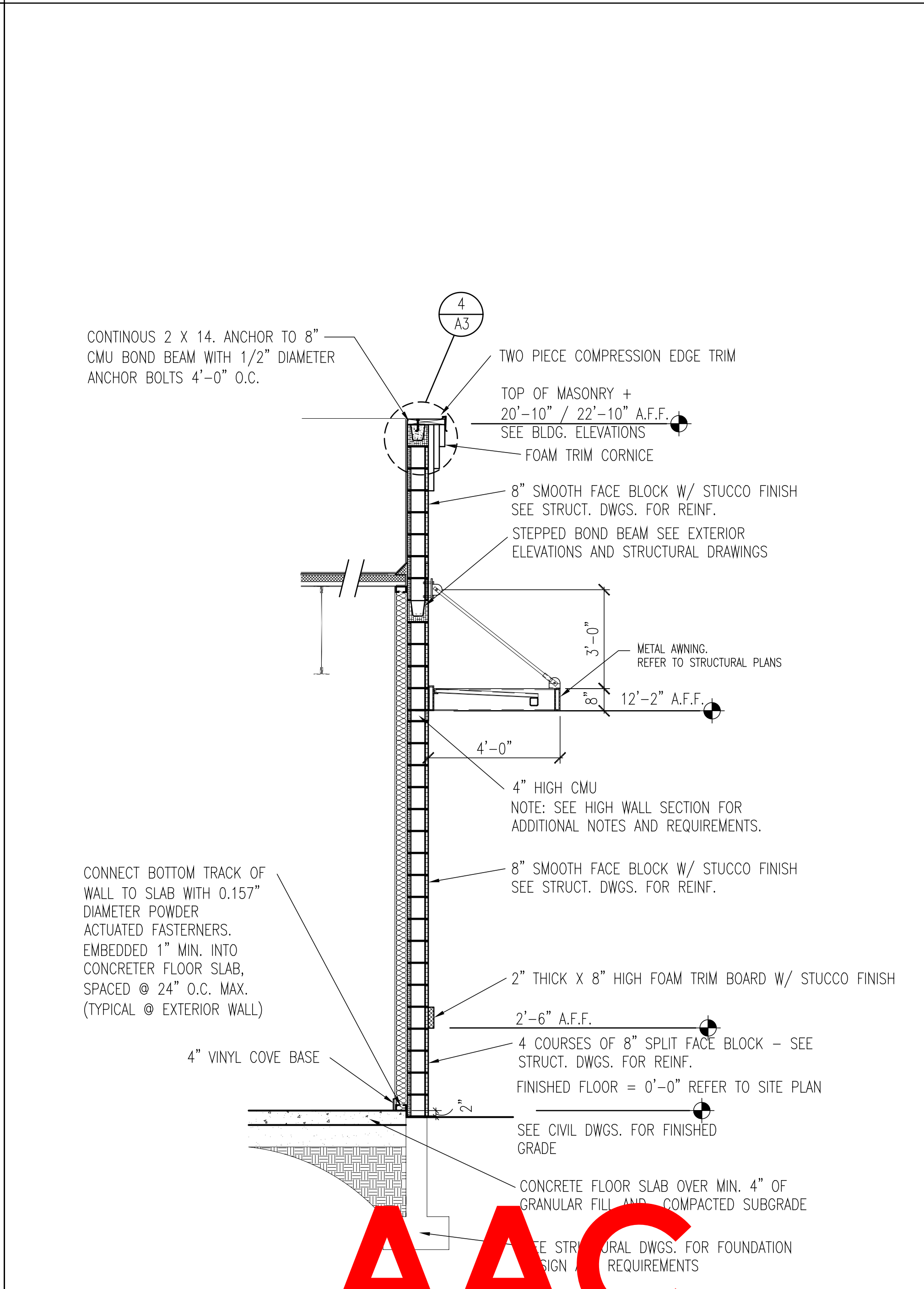


4 PARAPET DETAIL @ SOFFIT



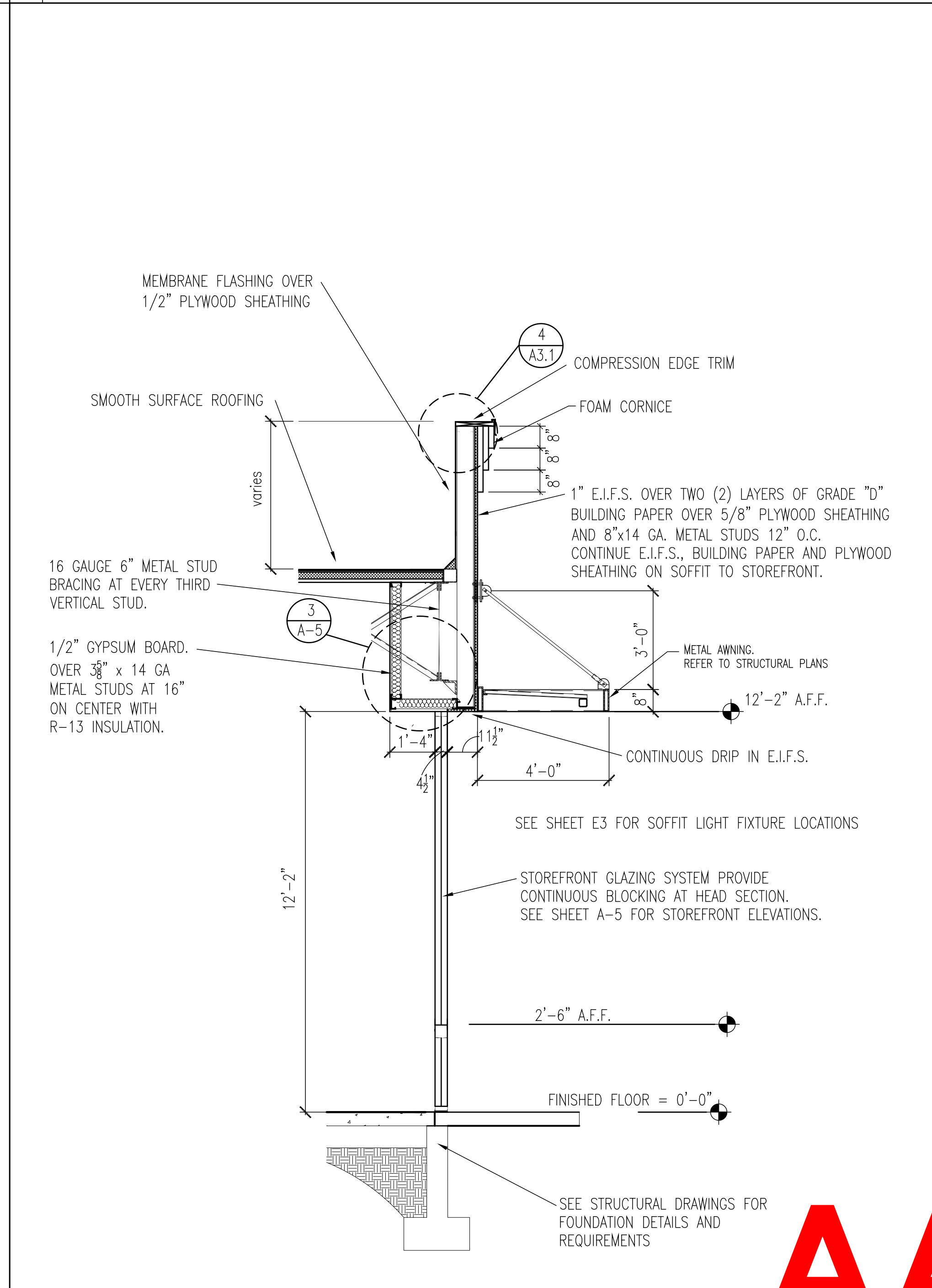
3 WALL SECTION - PILASTER

8 IN-PILASTER



2 WALL SECTION END WALL

AWS02



1 WALL SECTION - SIDE WALL (storefront)

AWS01

REVISIONS					
1	REV1	4	REV4		
2	REV2	5	REV5		
3	REV3	6	REV6		

AutoZone Store No. 6365	3001 WEST ATLANTIC AVE	POMPA NO BEACH FL 33096	EXTERIOR WALL SECTIONS
Architect: George Callow - License#AR0014155	123 South Front Street	Memphis, Tennessee 38103	For Bidding & Contractor Information Contact: McGraw - Hill Construction Tel. 615-884-1017 www.construction.com
George W Callow AR0014155	Digitally signed by George W Callow AR0014155	State of Florida Date: 2020.02.04 10:51:34 -06'00'	03/19/17
55 State of Florida			

PZ20-12000007  
2/2/21

PZ20-12000007  
03/03/2020